



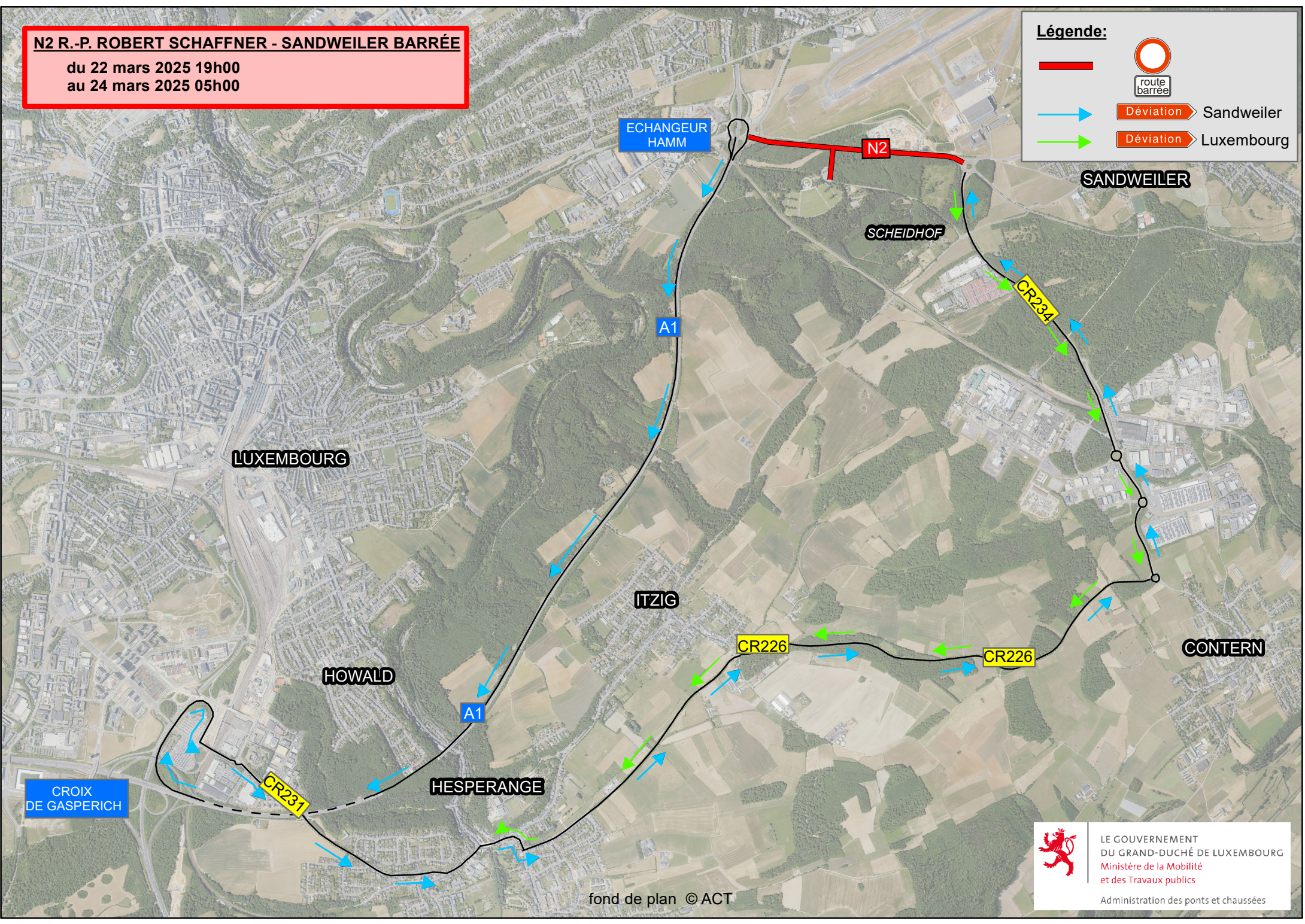


**N2 R.-P. ROBERT SCHAFFNER - SANDWEILER BARRÉE**

du 22 mars 2025 19h00  
au 24 mars 2025 05h00

**Légende:**

-  route barrée
-  route barrée
-  Déviation Sandweiler
-  Déviation Luxembourg



CROIX DE GASPERICH



LE GOUVERNEMENT  
DU GRAND-DUCHÉ DE LUXEMBOURG  
Ministère de la Mobilité  
et des Travaux publics  
Administration des ponts et chaussées